



Introducing Our Latest QuickBooks Integration!



Chad Klein

Account Manager

September 1, 2020

WHAT YOU'LL LEARN

- About the QuickBooks Online integration
- Integration Details
 - Nightly General Ledger transfer
 - Create Accounts Payable invoices from closed purchase orders
- Integration Pricing
- Q&A

QuickBooks Online integration

Key features:

- Automatically transfer the day's general ledger activity summary into your QuickBooks general ledger each night.
- Create an accounts payable invoice in QuickBooks minutes after you receive a purchase order in Paladin.

Note: Each feature is independent. You can choose to use either or both.



Nightly General Ledger transfer

The QuickBooks Online GL transfer feature automatically transfers the day's financial totals into QuickBooks each night, including:



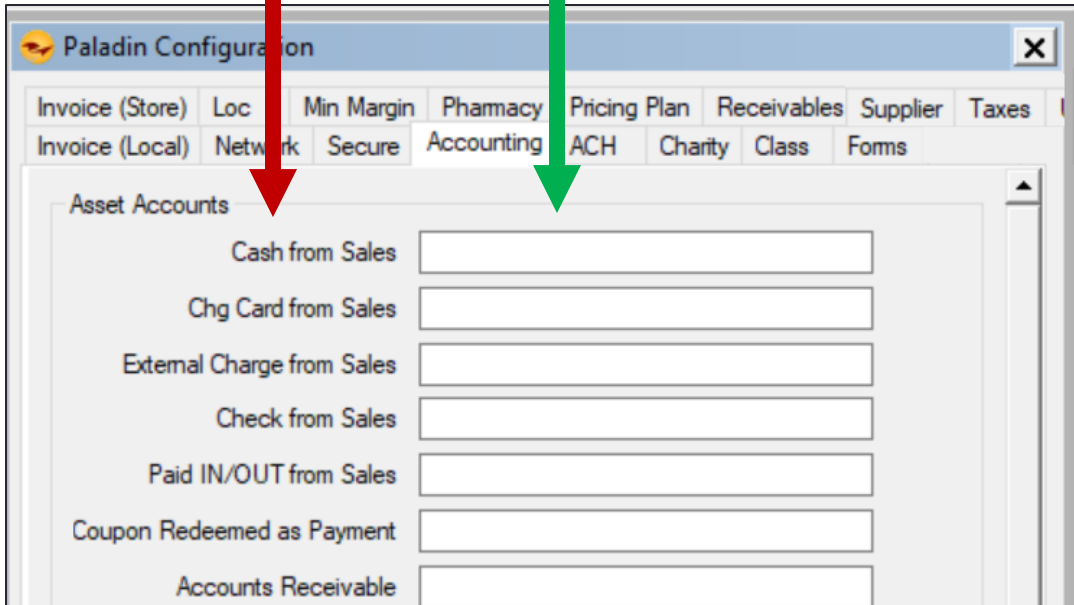
- Sales revenue
- Cost of goods sold
- Accounts receivable
- Accounts payable
- Tax liability
- And more

Set up: Assign QuickBooks accounts to Paladin categories

Paladin
accounting
categories



Enter QuickBooks
GL accounts



Paladin Configuration

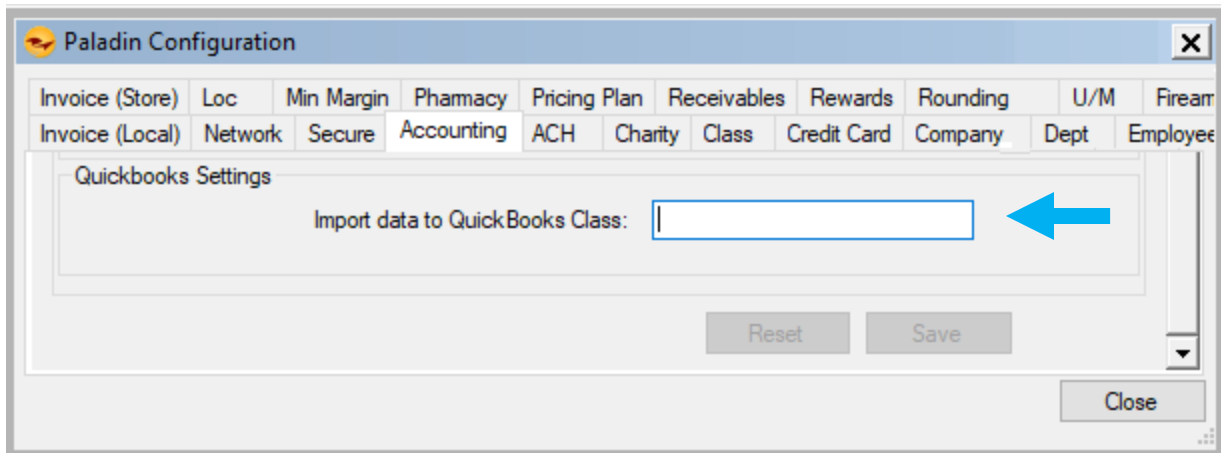
Invoice (Store) Loc Min Margin Pharmacy Pricing Plan Receivables Supplier Taxes
Invoice (Local) Network Secure Accounting ACH Charity Class Forms

Asset Accounts

Cash from Sales	<input type="text"/>
Chg Card from Sales	<input type="text"/>
External Charge from Sales	<input type="text"/>
Check from Sales	<input type="text"/>
Paid IN/OUT from Sales	<input type="text"/>
Coupon Redeemed as Payment	<input type="text"/>
Accounts Receivable	<input type="text"/>

- Before the GL transfer feature is turned on, you will assign your QuickBooks accounts to the Paladin accounting categories.
- To do this, go to: **File > Setup > Accounting** tab and enter the appropriate QuickBooks account number or name for each accounting category.

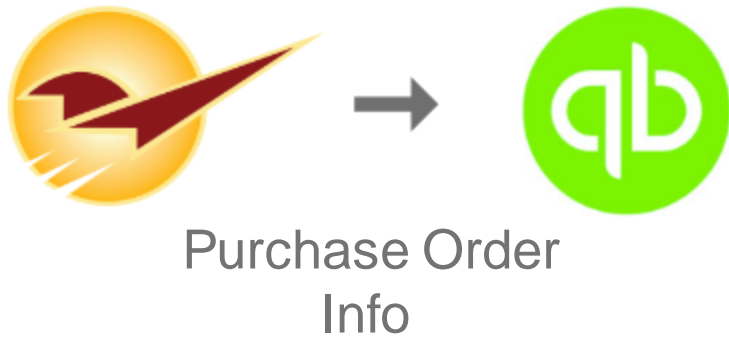
Setup: Additional integration settings



- If you have different companies set up in QuickBooks, you can select the company for the store's GL transfer during integration setup.
- If you are using class tracking in QuickBooks, you can specify the class for the GL transfer when you assign QuickBooks accounts on the **Accounting** tab.

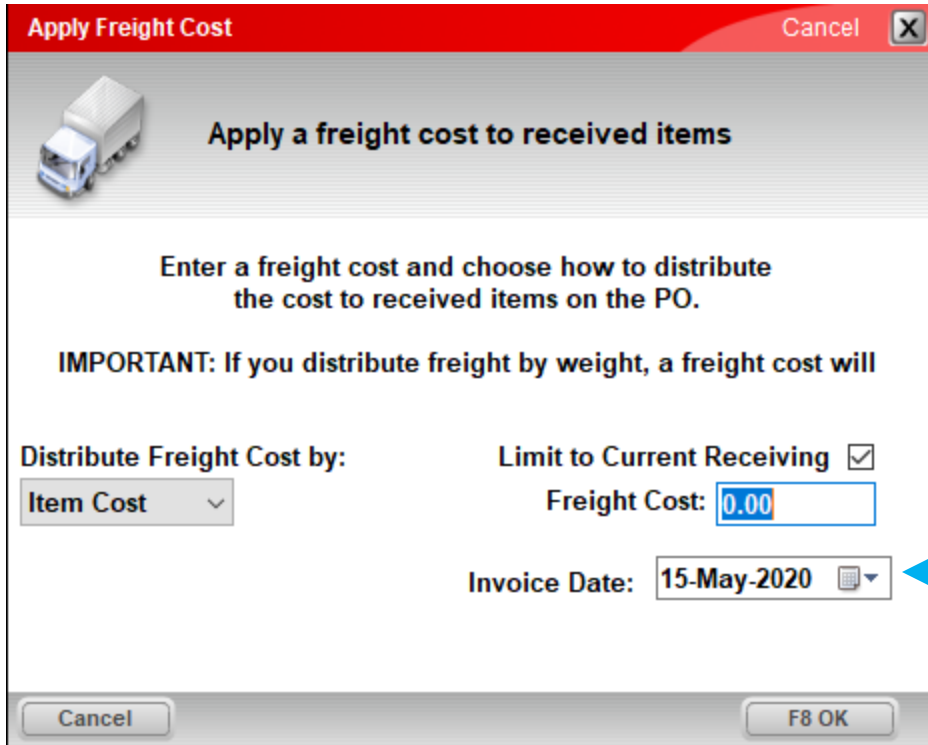
Create accounts payable invoices in
QuickBooks from closed POs (Paladin)

Auto-create accounts payable invoices



- Just moments after a purchase order is closed in Paladin, the received order information is queued up for transfer to QuickBooks.
- When the data transfer occurs a short time later, a new Accounts Payable invoice will appear in QuickBooks with the purchase details.

Specifying an invoice date



Apply Freight Cost Cancel X

Apply a freight cost to received items


Enter a freight cost and choose how to distribute the cost to received items on the PO.

IMPORTANT: If you distribute freight by weight, a freight cost will

Distribute Freight Cost by:

Limit to Current Receiving

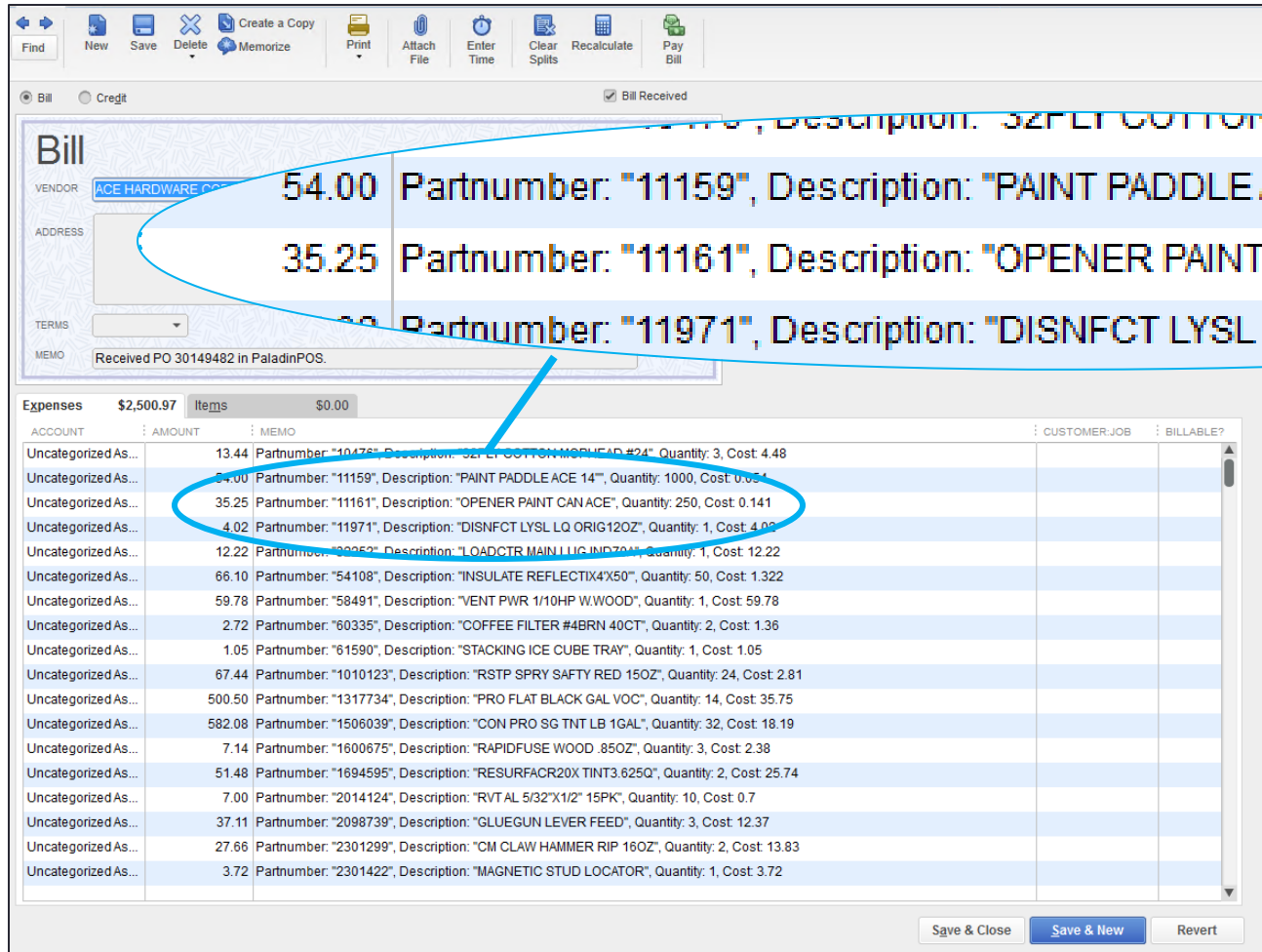
Freight Cost:

Invoice Date: 

Cancel F8 OK

- When you close a PO, you can specify an **Invoice Date** for the in the **Apply Freight Cost** window.
- This date will appear as the DATE value on the QuickBooks accounts payable invoice.

Accounts payable invoice in QuickBooks



Bill
 VENDOR: ACE HARDWARE CO.
 ADDRESS: [Redacted]
 TERMS: [Redacted]
 MEMO: Received PO 30149482 in PaladinPOS.

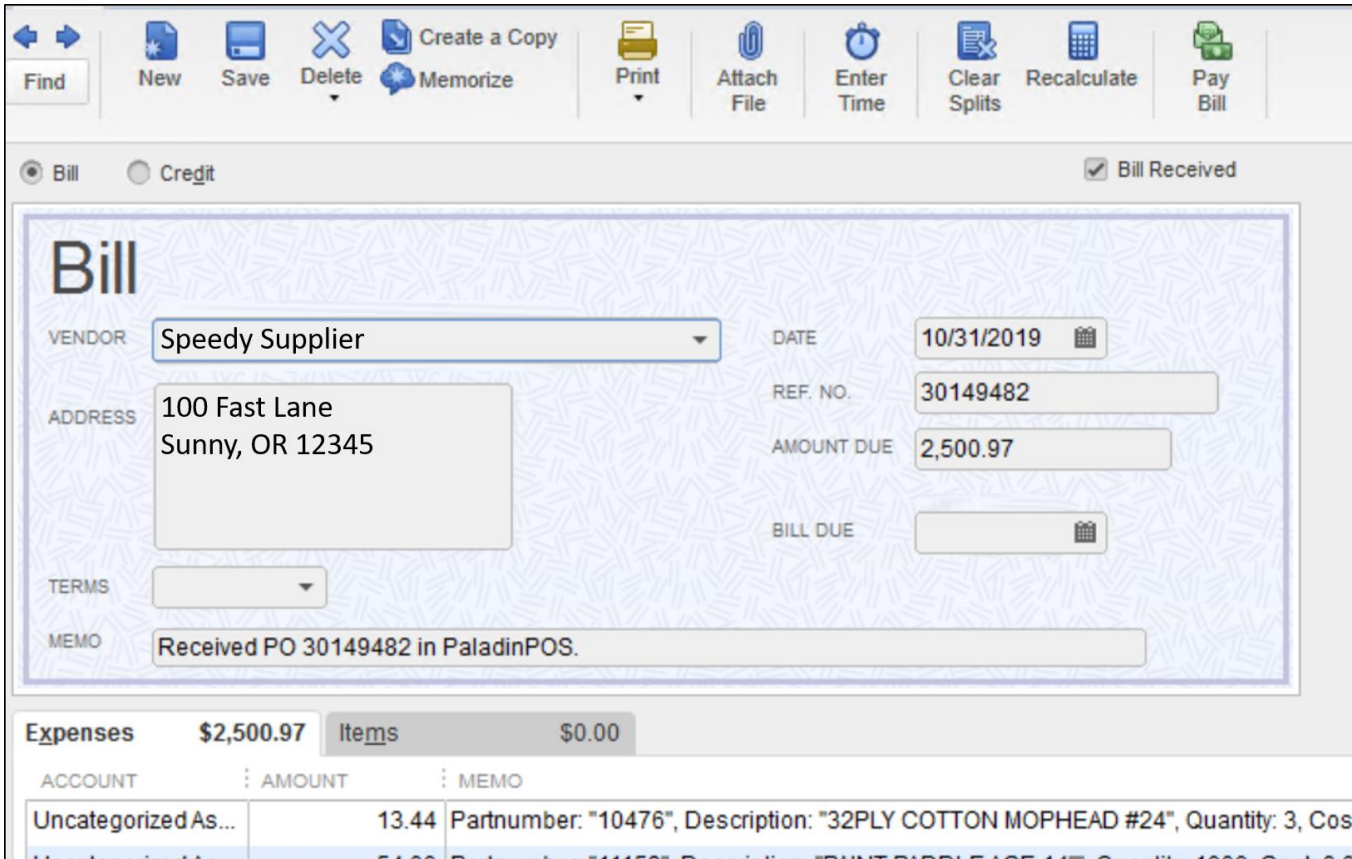
AMOUNT	Partnumber	Description	Quantity	Cost
54.00	"11159"	"PAINT PADDLE ACE 14"	1000	0.054
35.25	"11161"	"OPENER PAINT CAN ACE"	250	0.141
4.02	"11971"	"DISINFCT LYSL LQ ORIG12OZ"	1	4.02

Expenses \$2,500.97 **Items** \$0.00

ACCOUNT	AMOUNT	MEMO	CUSTOMER-JOB	BILLABLE?
Uncategorized As...	13.44	Partnumber: "10476", Description: "SPLIT COTTON WOODCAD #24", Quantity: 3, Cost: 4.48		
Uncategorized As...	54.00	Partnumber: "11159", Description: "PAINT PADDLE ACE 14", Quantity: 1000, Cost: 0.054		
Uncategorized As...	35.25	Partnumber: "11161", Description: "OPENER PAINT CAN ACE", Quantity: 250, Cost: 0.141		
Uncategorized As...	4.02	Partnumber: "11971", Description: "DISINFCT LYSL LQ ORIG12OZ", Quantity: 1, Cost: 4.02		
Uncategorized As...	12.22	Partnumber: "39252", Description: "LOADCTR MAIN LUG INP70M", Quantity: 1, Cost: 12.22		
Uncategorized As...	66.10	Partnumber: "54108", Description: "INSULATE REFLECTIX4X50", Quantity: 50, Cost: 1.322		
Uncategorized As...	59.78	Partnumber: "58491", Description: "VENT PWR 1/10HP W.WOOD", Quantity: 1, Cost: 59.78		
Uncategorized As...	2.72	Partnumber: "60335", Description: "COFFEE FILTER #4BRN 4OCT", Quantity: 2, Cost: 1.36		
Uncategorized As...	1.05	Partnumber: "61590", Description: "STACKING ICE CUBE TRAY", Quantity: 1, Cost: 1.05		
Uncategorized As...	67.44	Partnumber: "1010123", Description: "RSTP SPRY SAFTY RED 15OZ", Quantity: 24, Cost: 2.81		
Uncategorized As...	500.50	Partnumber: "1317734", Description: "PRO FLAT BLACK GAL VOC", Quantity: 14, Cost: 35.75		
Uncategorized As...	582.08	Partnumber: "1506039", Description: "CON PRO SG TNT LB 1GAL", Quantity: 32, Cost: 18.19		
Uncategorized As...	7.14	Partnumber: "1600675", Description: "RAPIDFUSE WOOD .85OZ", Quantity: 3, Cost: 2.38		
Uncategorized As...	51.48	Partnumber: "1694595", Description: "RESURFACR20X TINT3.625O", Quantity: 2, Cost: 25.74		
Uncategorized As...	7.00	Partnumber: "2014124", Description: "RVT AL 5/32"X1/2" 15PK", Quantity: 10, Cost: 0.7		
Uncategorized As...	37.11	Partnumber: "2098739", Description: "GLUEGUN LEVER FEED", Quantity: 3, Cost: 12.37		
Uncategorized As...	27.66	Partnumber: "2301299", Description: "CM CLAW HAMMER RIP 16OZ", Quantity: 2, Cost: 13.83		
Uncategorized As...	3.72	Partnumber: "2301422", Description: "MAGNETIC STUD LOCATOR", Quantity: 1, Cost: 3.72		

The accounts payable invoice in QuickBooks will show a list of PO line items, including part number, description, cost, quantity and line item extension (amount).

Accounts payable invoice in QuickBooks



The screenshot shows the QuickBooks interface for creating an Accounts Payable invoice. The top toolbar includes buttons for Find, New, Save, Delete, Memorize, Print, Attach File, Enter Time, Clear Splits, Recalculate, and Pay Bill. The form is set to "Bill" and "Bill Received" is checked. The vendor is "Speedy Supplier" with address "100 Fast Lane, Sunny, OR 12345". The date is 10/31/2019, REF. NO. is 30149482, and AMOUNT DUE is 2,500.97. The memo is "Received PO 30149482 in PaladinPOS." Below the form, the "Expenses" section shows a total of \$2,500.97 and "Items" of \$0.00. A table lists the expense details:

ACCOUNT	AMOUNT	MEMO
Uncategorized As...	13.44	Partnumber: "10476", Description: "32PLY COTTON MOPHEAD #24", Quantity: 3, Cos

The invoice also includes:

- **VENDOR** (supplier) details from Paladin
- **DATE** from the **Apply Freight Cost** window.
- **REF NO.** set to Paladin PO #
- **AMOUNT DUE**
- **MEMO** with Paladin POS reference

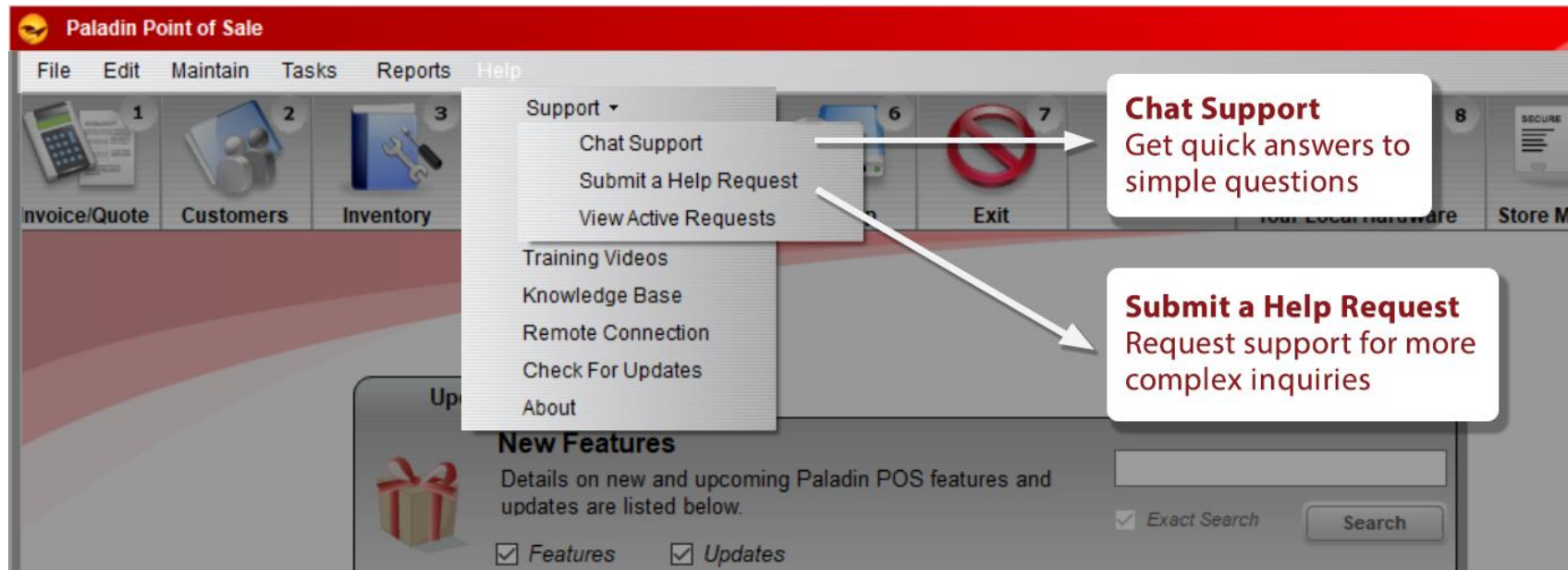
Setup: Import Accounts Payable invoice history



- When the integration is first turned on, you have a one-time opportunity to create Accounts Payable invoices in QuickBooks for purchase orders that were previously closed during a period you specify.
- To take advantage of this feature, let Paladin Support know the start date for your historical import.

Ready, Set, GO!

When you're ready to turn on the integration or if you have questions, you can contact Paladin Support using our new **Help > Support > Submit a Help Request** feature in Paladin.



Paladin Pricing



QuickBooks Online integration

- Setup: \$249
- Monthly: \$29

QuickBooks Desktop integration

- Setup: \$399
- Monthly: \$29

QuickBooks subscription must be purchased separately.



Q&A

Next Webinar:

Why GMROI is so Important to Your Business

September 22 @ 9am PT

Save your seat! Go to portal.paladinpos.com/webinars



Check out our [Summer 2020 Release Guide](#) on the Help Portal.

Expand your Paladin Knowledge:

Stay relevant in retail:
paladinpointofsale.com/retailsience

Self help at:
portal.paladinpos.com

Webinars available at:
portal.paladinpos.com/webinars

Follow us for Paladin news and updates:

